



# Moldura Roxtec CF 24

Vedação de abrir para gabinetes e invólucros.

A vedação para entrada Roxtec CF 24 tem uma moldura aparafusada que é feita de alumínio. A compressão é integrada à moldura. É possível abrir a moldura e instalá-la com facilidade em volta dos cabos existentes. O produto é fornecido como um kit pronto, que inclui todos os componentes necessários.



- Leve
- Eficiente em área
- Perfeito para retrofit/manutenção

## Características do produto



Certificado contra fogo



IP/UL NEMA

## Estrutura da instalação



Gabinetes e invólucros

## Classificações e certificados

### Fogo

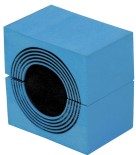
- Classificação E/EI de acordo com EN 45545 E30

### Proteção contra vazamento

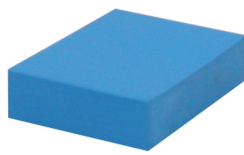
- IP 66/67

## Dados de componente de vedação

### Componentes de vedação



Módulo CM com Multi-diâmetro™



Módulo de compensação sólida CM



Placa de separação C

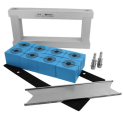


Lubrificante Roxtec

Para obter informações detalhadas, acesse [roxtec.com](https://www.roxtec.com).

## Kits de passagem pré-configurada

mm/kg



CF 24/8



CF 24/12



CF 24/28

Título	Configuração	Dimensões externas WxHxD	Dimensões da abertura w x h	Peso	Art. No.
CF 24/8	8x (10.0-25.0)	209 x 100 x 30	170(-2) x 60	1.5	CF00000240035
CF 24/12	8x (3.5-16.5), 4x (9.5-32.5)	209 x 100 x 30	170(-2) x 60	1.5	CF00000241235
CF 24/28	16x (3.5-16.5), 12x (3.5-10.5)	209 x 100 x 30	170(-2) x 60	1.5	CF00000242835



The product information provided by Roxtec does not release the purchaser of the Roxtec system, or part thereof, from the obligation to independently determine the suitability of the products for the intended process, installation and/or use.

Roxtec gives no guarantee for the Roxtec system or any part thereof and assumes no liability for any loss or damage whatsoever, whether direct, indirect, consequential, loss of profit or otherwise, occurred or caused by the Roxtec systems or installations containing components not manufactured by an authorized manufacturer and/or occurred or caused by the use of the Roxtec system in a manner or for an application other than for which the Roxtec system was designed or intended.

Roxtec expressly excludes any implied warranties of merchantability and fitness for a particular purpose and all other express or implied representations and warranties provided by statute or common law. User determines suitability of the Roxtec system for intended use and assumes all risk and liability in connection therewith. In no event shall Roxtec be liable for indirect, consequential, punitive, special, exemplary or incidental damages or losses.

The Roxtec products are offered and sold in accordance with the conditions of the Roxtec General Terms of Sales. The latest version of the Roxtec General Terms of Sales can be downloaded from <https://www.roxtec.com/en/about-us/about-roxtec/general-terms-of-sales/>

We reserve the right to make changes to the product and technical information without further notice. Any errors in print or entry are no claims for indemnity. The content of this publication is the property of Roxtec International AB and is protected by copyright.

This document was generated on: 2024-04-06